

# Food security and food assistance in the US

Christopher B. Barrett, John Hoddinott, Zixia Huang,  
Kelsey Schreiber, Yuhe Zhang, Jason Zhao

Cornell University

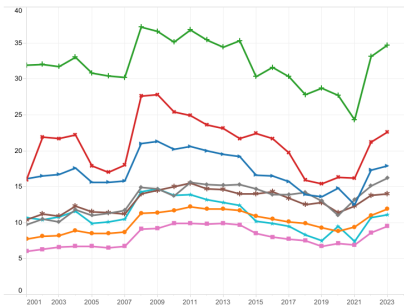
Presentation to the Virginia Commission to End Hunger  
November 2024

# Food Security in the US

Each year 10-15% of US hhs food insecure. Much higher for hhs w/children, esp. single parent hhs, and for Black and Hispanic hhs.

Food insecurity by household composition, 2001-23

Percent of households

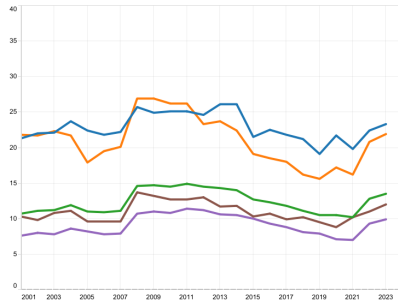


Source: USDA, Economic Research Service using U.S. Department of Commerce, Bureau of the Census, Current Population Survey Food Security Supplements data.

- Female head with children, no spouse
- Male head with children, no spouse
- All households with children < 18 yrs
- Men living alone
- All households with no children < 18 yrs
- Married-couple families
- Women living alone
- More than one adult

Trends in food insecurity by race and ethnicity, 2001-23

Percent of households



Note: The "Other, non-Hispanic" category for the race and ethnicity of a household reference person includes non-Hispanic adults that identify as multiple races or ethnicities including American Indian, Alaskan Native, Asian, Native Hawaiian, or Pacific Islander. There are not sufficient respondents in the Current Population Survey Food Security Supplement to present reliable estimates for these individual groups for all outcomes, so they are grouped together into the "Other, non-Hispanic" category.

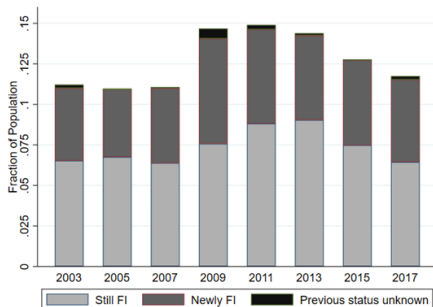
Source: USDA, Economic Research Service using U.S. Department of Commerce, Bureau of the Census, Current Population Survey Food Security Supplements data.

- Black, non-Hispanic
- Hispanic
- All households
- Other, non-Hispanic
- White, non-Hispanic

# Food Security Dynamics in the US

- 2/3 of US hhs never food insecure 2001-17
- >1/2 of food insecurity spells are short (<2 yrs)
- Most food insecure hhs at any moment in time suffer chronic food insecurity
- Main driver is poverty and jobs

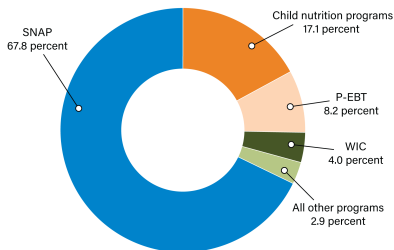
Source: Lee, Barrett / Hoddinott (AJAE 2024)



# Private and Public Food Assistance

- Private food assistance (food banks/pantries) large globally
- Public food assistance programs are FAR larger, in US/globally
- SNAP provides ~ 9x as much food as food banks/pantries
- Roughly 15% of US pop receives public food assistance
- SNAP lower cost delivery than food banks/pantries

**USDA food and nutrition assistance spending by program, FY 2023**  
*SNAP accounted for about two-thirds of spending*



FY = Fiscal year. SNAP = Supplemental Nutrition Assistance Program. WIC = Special Supplemental Nutrition Program for Women, Infants, and Children. Child nutrition programs = National School Lunch Program; School Breakfast Program; Child and Adult Care Food Program; Summer Food Service Program; related State administrative expenses; and other related child nutrition costs. P-EBT = Pandemic Electronic Benefit Transfer. All other programs = Nutrition family assistance grants to Puerto Rico, the Northern Marianas, and American Samoa; Commodity Supplemental Food Program; the Food Distribution Program on Indian Reservations; the Nutrition Services Incentive Program; the Special Milk Program; Disaster Feeding; The Emergency Food Assistance Program; and nutrition programs administration.

Note: The figure is based on preliminary data from the September 2023 *Program Information Report (Keydata)* released by USDA, Food and Nutrition Service (FNS) in December 2023.

Source: USDA, Economic Research Service using USDA, FNS data.

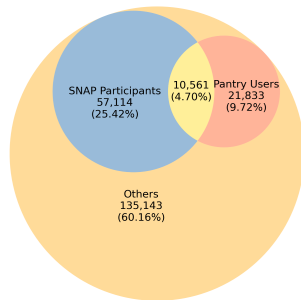
# Private and Public Food Assistance in Upstate New York

**2017-21 admin data from 6-county Southern Tier region of upstate NY served by SNAP and >130 food pantries reveals important points:**

- ~ 40% of population received food assistance (FA) at least once

## **Of those receiving FA:**

- >75% use SNAP; <12% use both
- ~ 55% single adult hhs (62% among SNAP participants)
- ~ 1/3 have children
- ~ 60% female headed
- Big spike in pantry use Mar-May 2020 by those not on SNAP; no change among SNAP recipients



Total Household Count for Six Counties (n=224,651)

**Thank you for your interest and your time. Please reach out with questions/comments to:**

**Chris Barrett  
chris.barrett@cornell.edu  
607-255-4489**